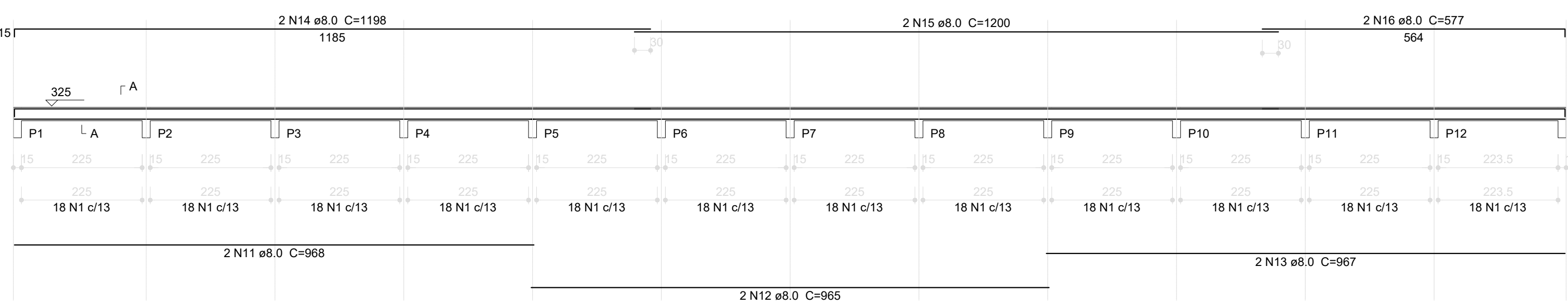


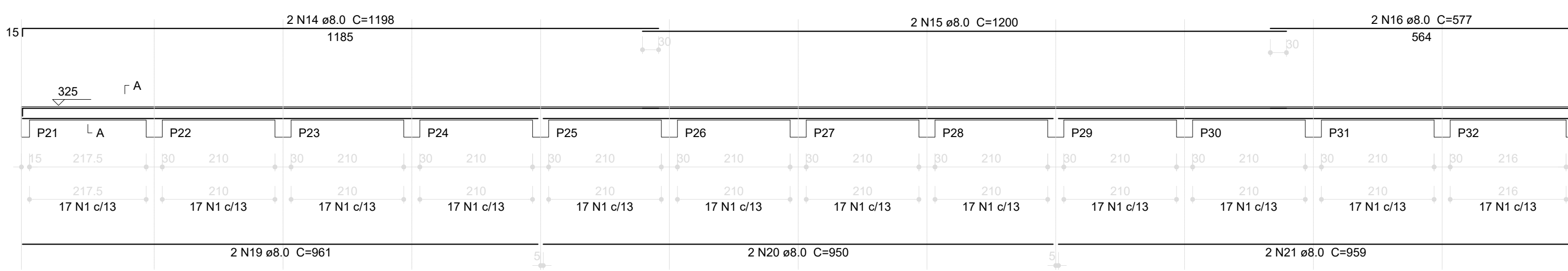
V1

ESC 1:75



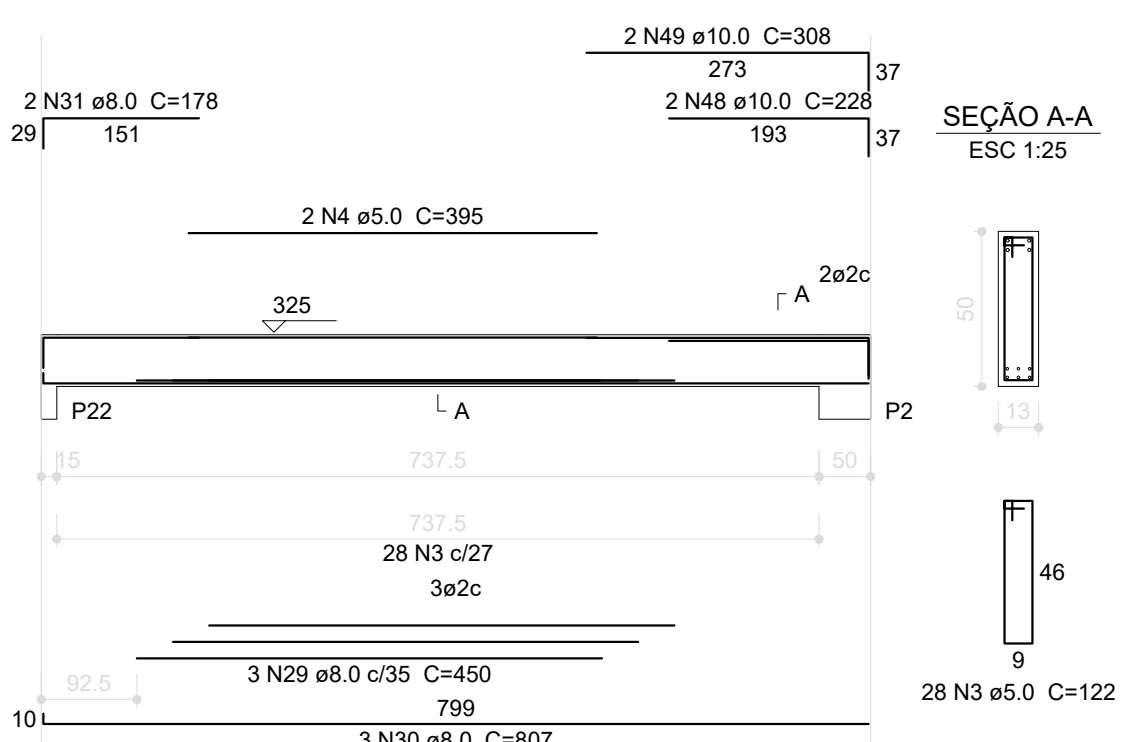
V3

ESC 1:75



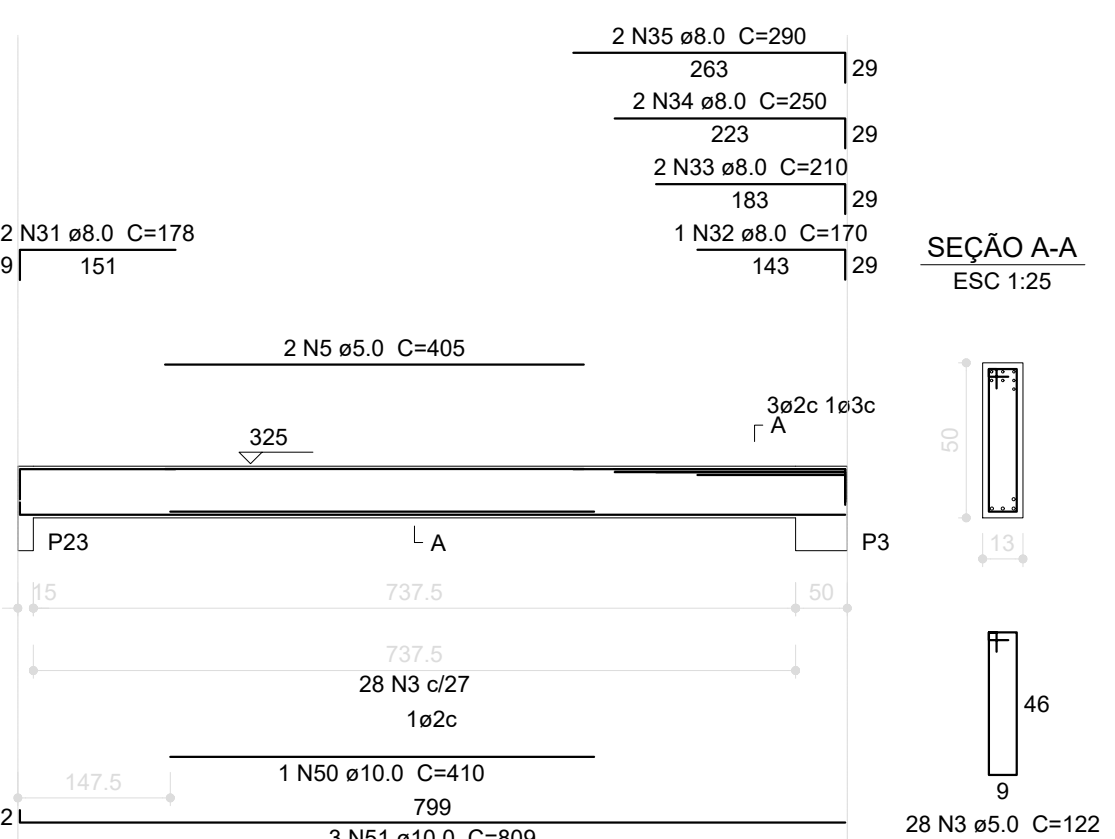
V6

ESC 1:75



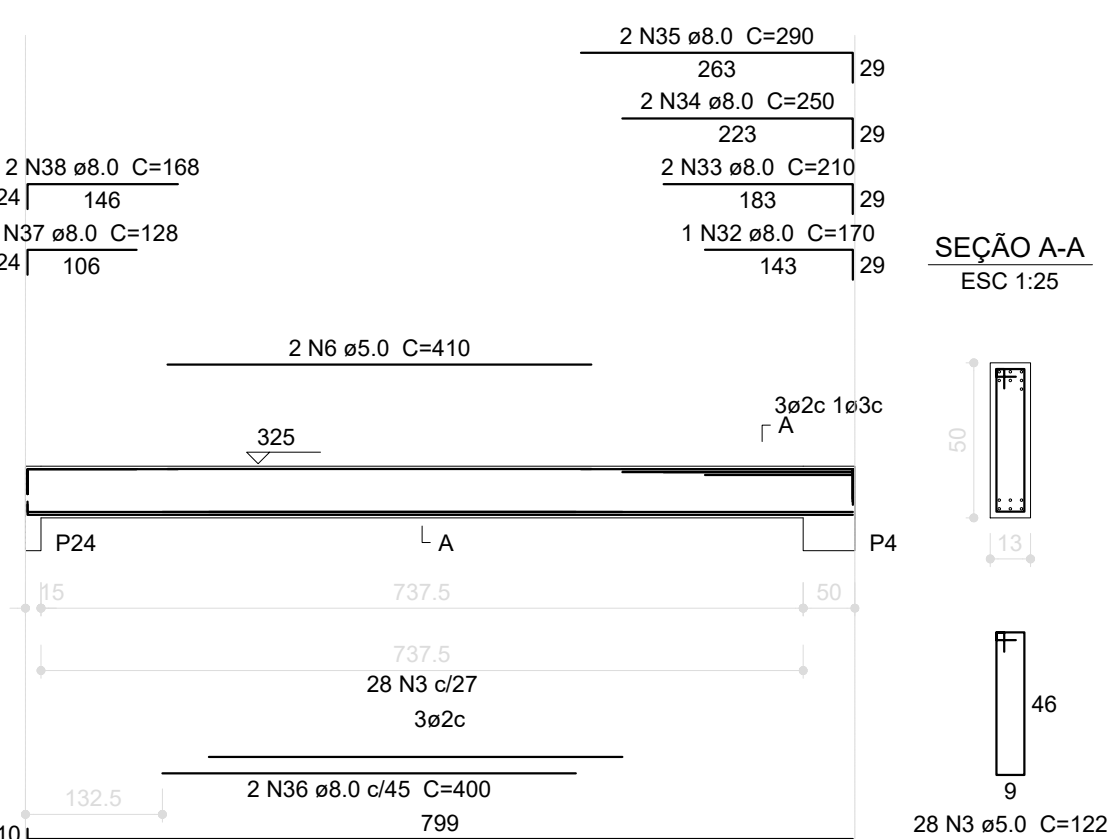
V7

ESC 1:75



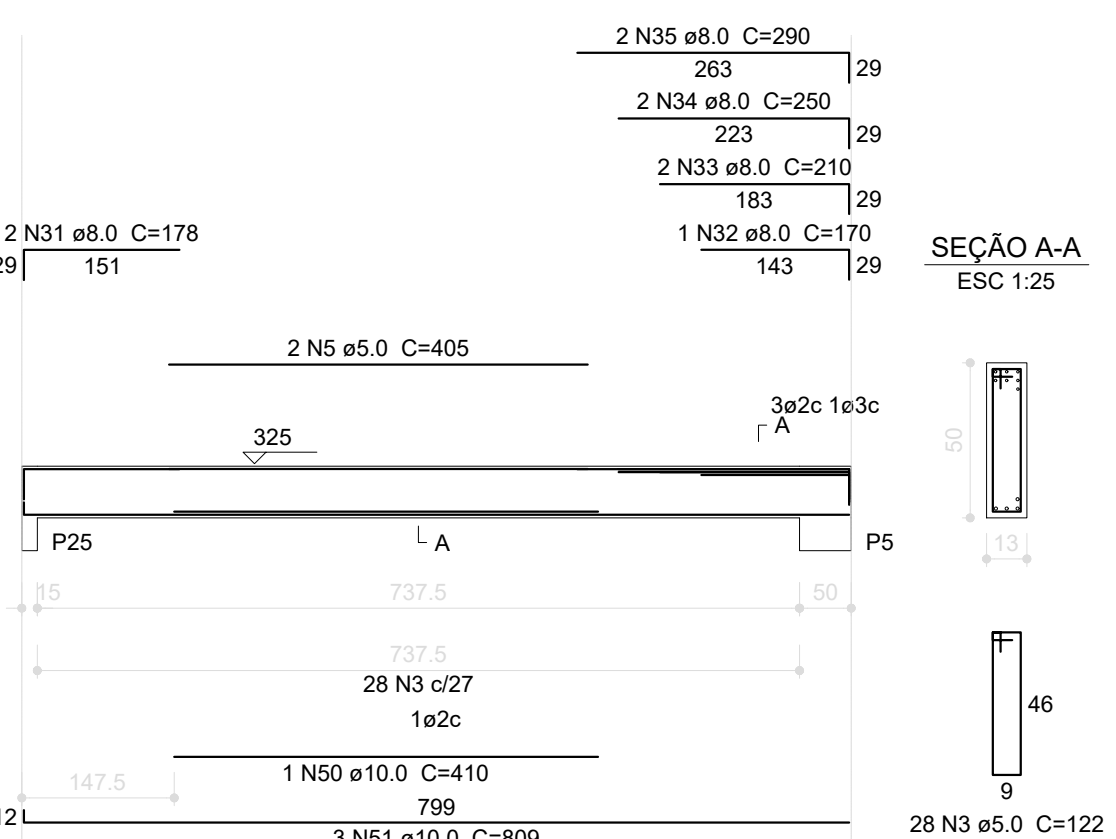
V8

ESC 1:75



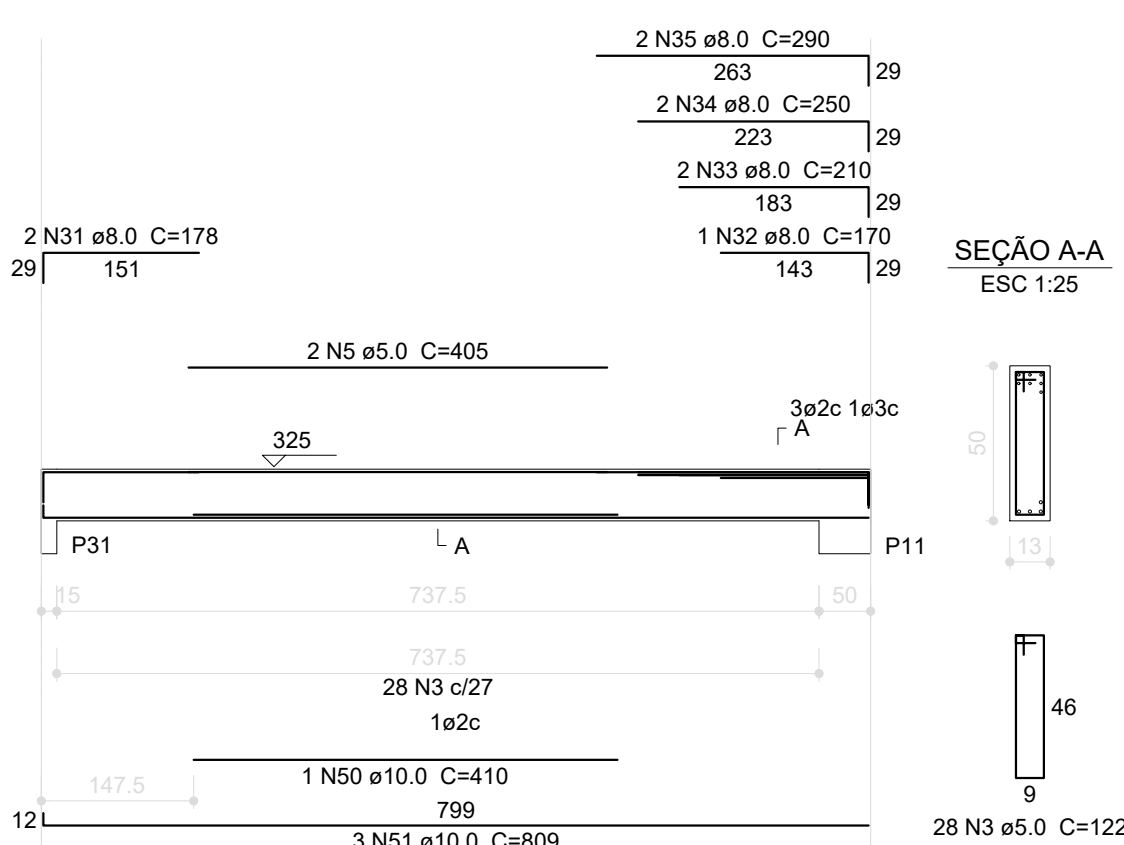
V9

ESC 1:75



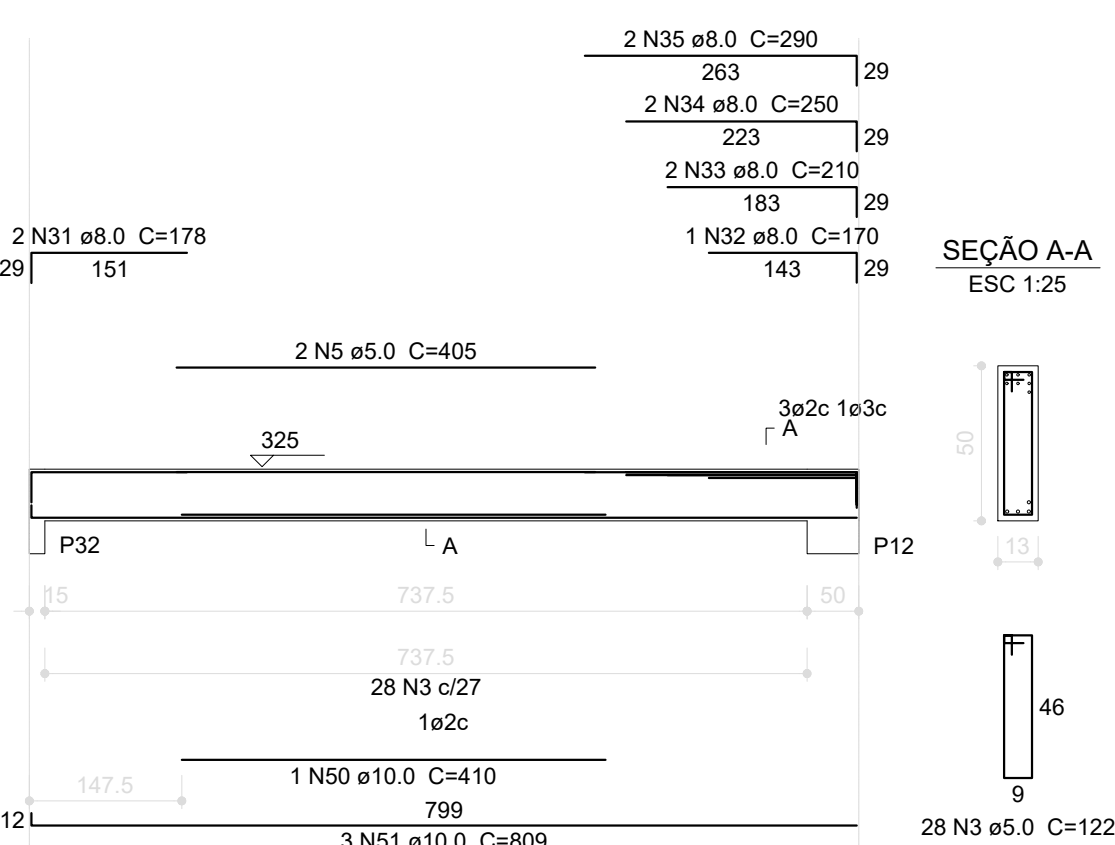
V15

ESC 1:75



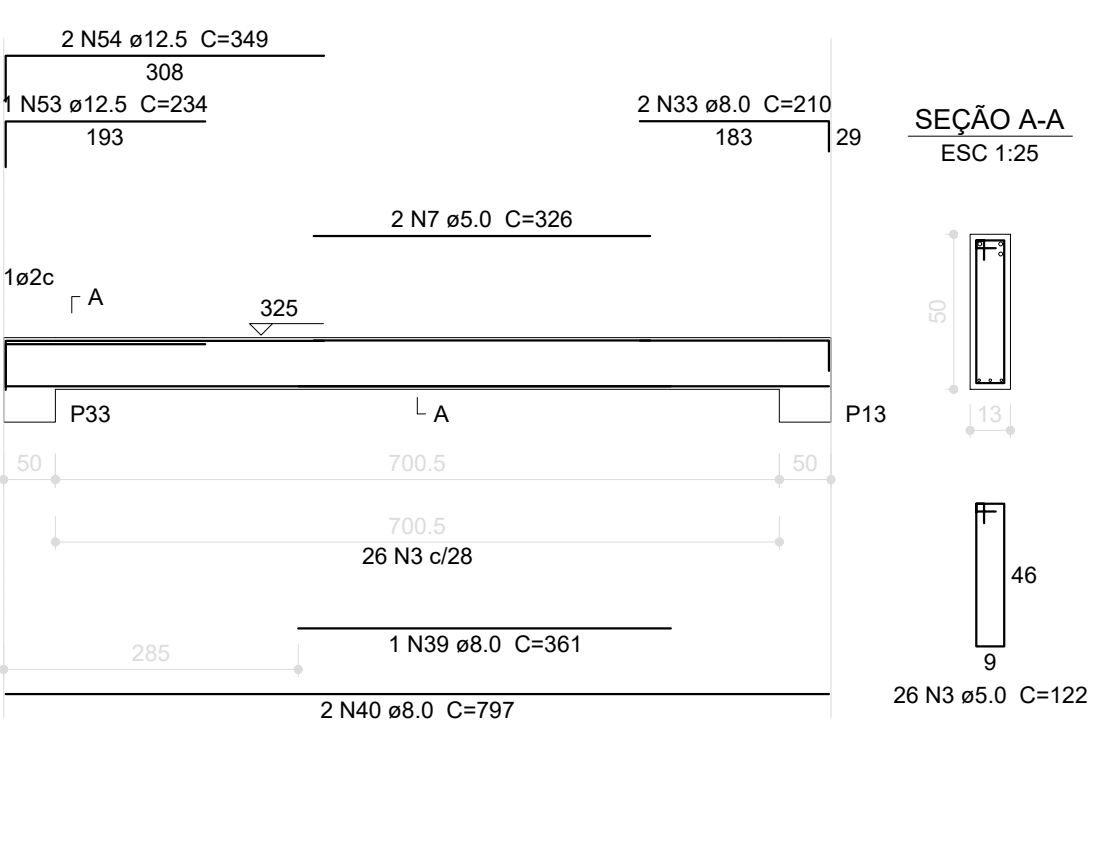
V16

ESC 1:75



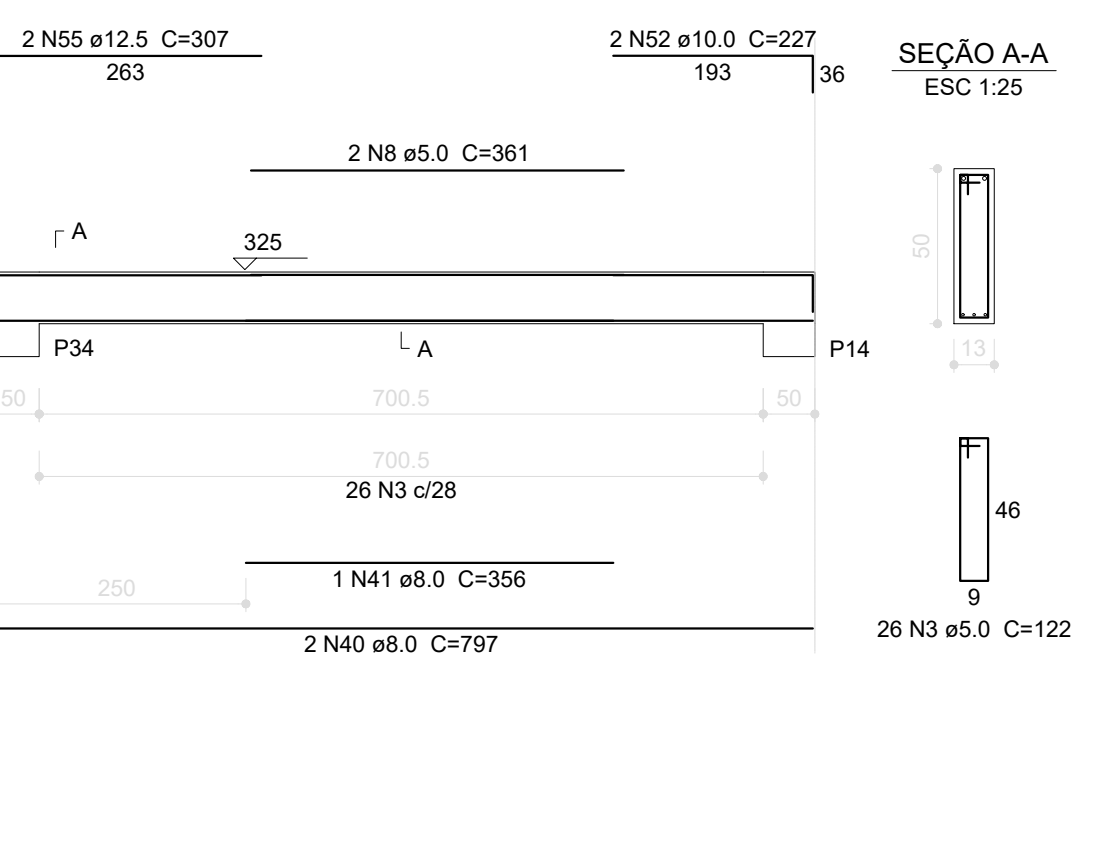
V17

ESC 1:75



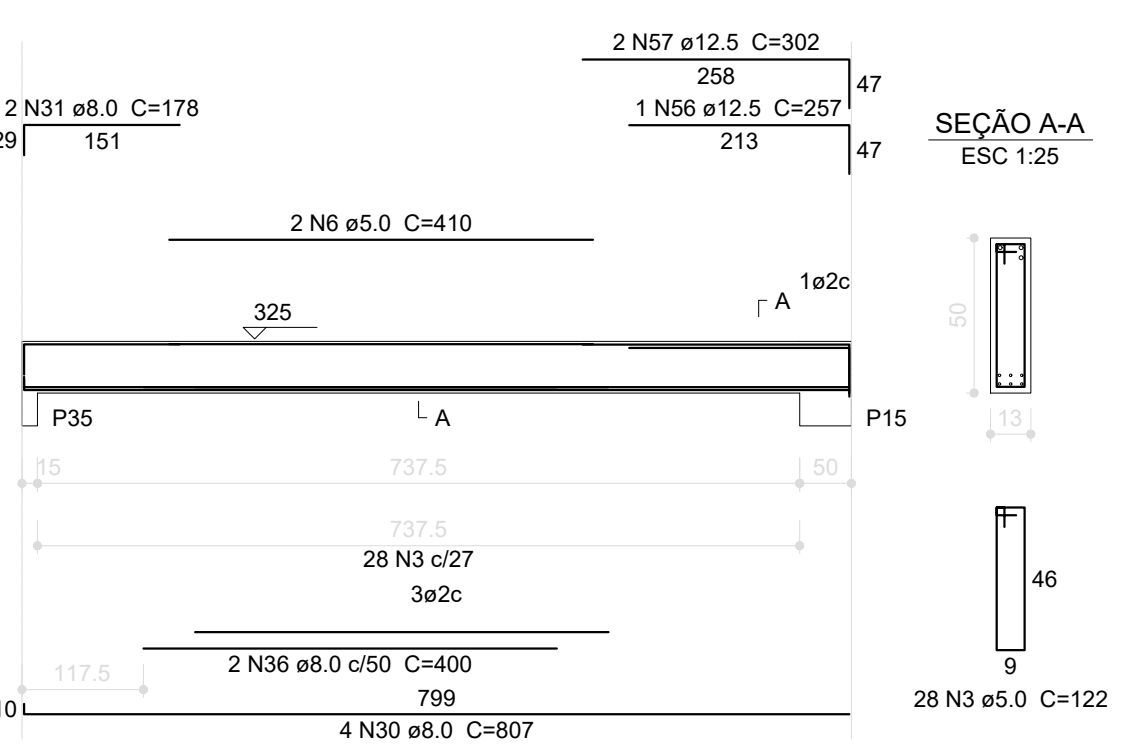
V18

ESC 1:75



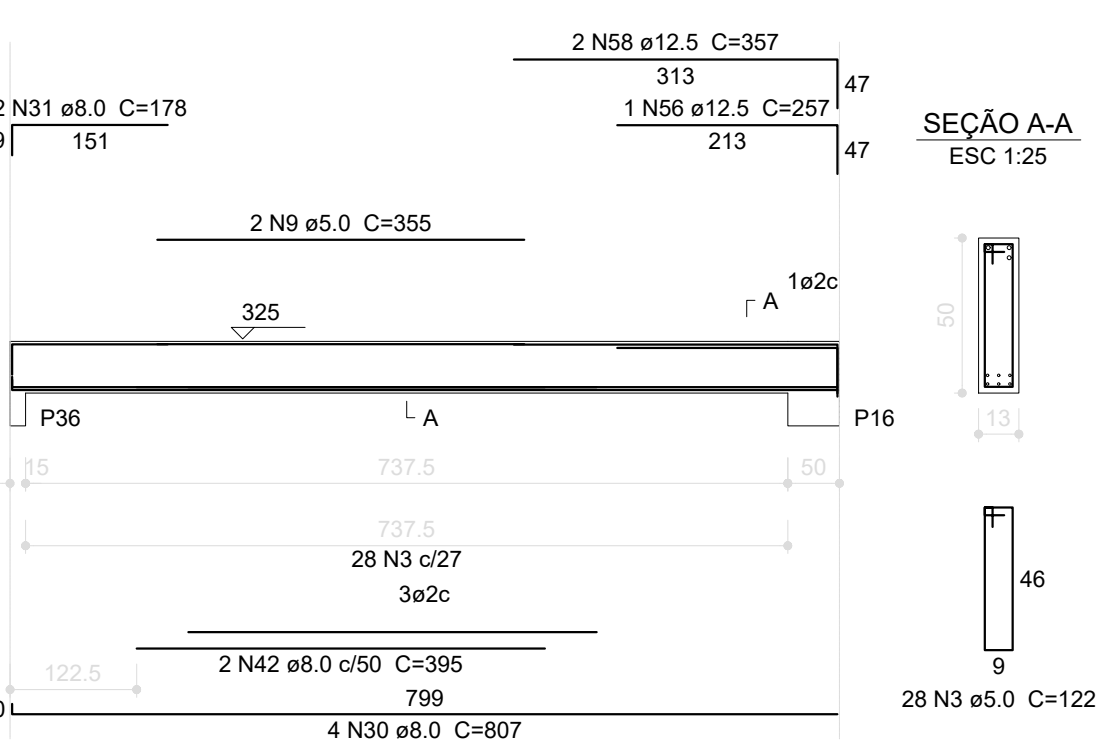
V19

ESC 1:75



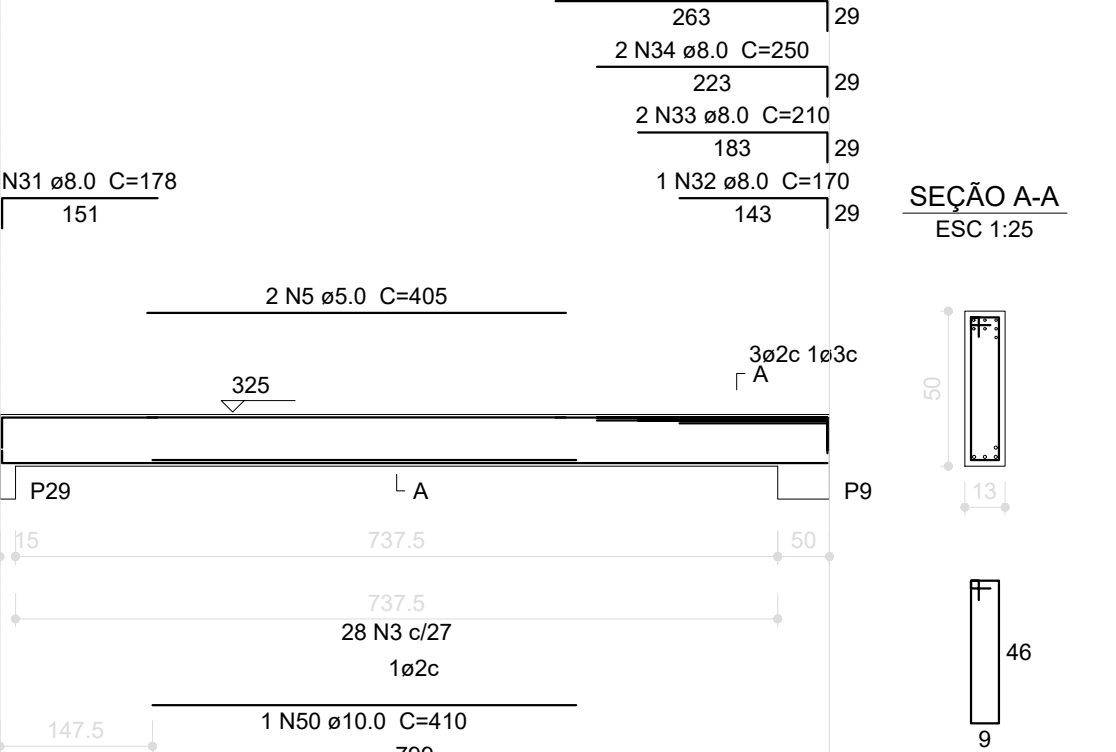
V20

ESC 1:75



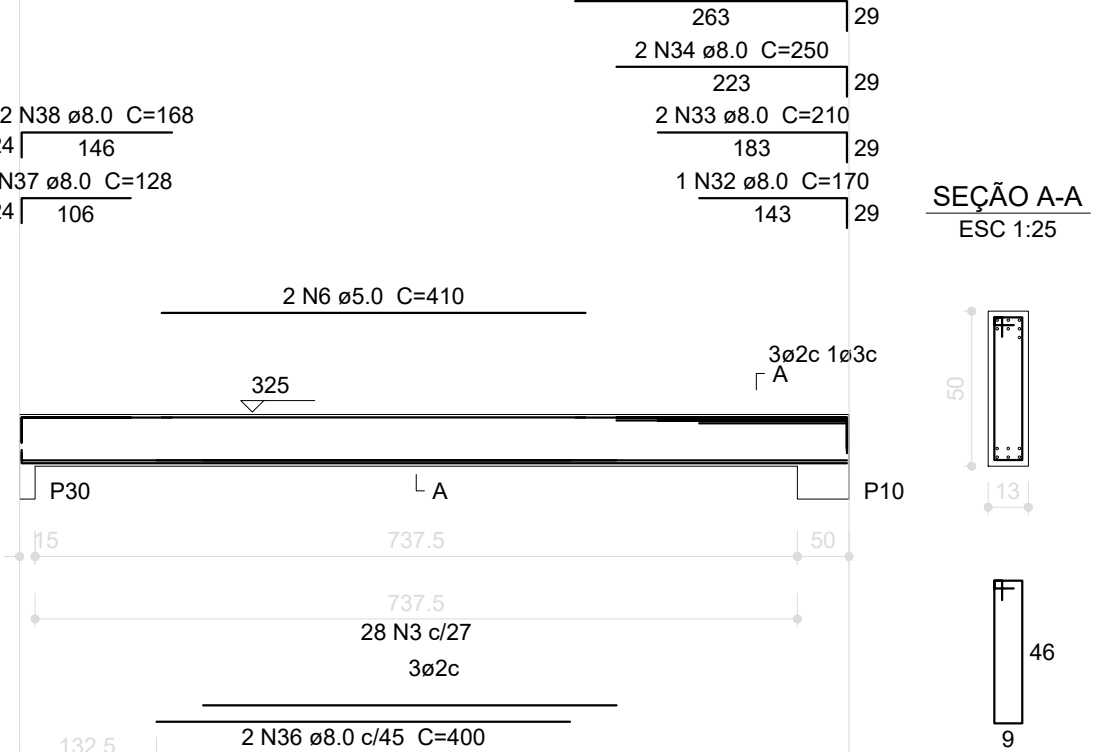
V13

ESC 1:75



V14

ESC 1:75



Resumo do aço

ACO	DIAM (mm)	C.TOTAL (m)	PESO + 10 % (kg)
CASO	8.0	879.6	347.4
	10.0	213.9	132.0
	12.5	33.8	32.5
	5.0	1083.7	166.9
CASO	512.0		
CASO	166.9		
PESO TOTAL (kg)			
Volume de concreto (C-25) = 11.27 m³			
Área de forma = 200.0 m²			

1 VIGAS NÍVEL 325
ESCALA: INDICADA



PROJETO PADRÃO - FNE

PROPRIETÁRIO :
ENDEREÇO:
MUNICÍPIO - UF:

PROPRIETÁRIO
RESP. TÉCNICO CREA
AUTOR DO PROJETO CAU

DULO
CREA
RA

OBSERVAÇÕES:

ESCOLA 12 SALAS DE AULA PROJETO DE ESTRUTURA

COORDENAÇÃO CGEST - Coordenação Geral de Infraestrutura Educativa	BLOCO E: PEDAGÓGICO VIGAS NÍVEL 325	SCV
FORMATO (116x594)	REVISÃO R.03	PRANCHAS 29/42
	ESCALA INDICADA MAIO 2014	